



# THE PURPLE PIG GAZETTE

## California-Hawaii Elks Major Project Inc.

### May/June, 2014



#### From the Piggy Bank Newsletter

**Editor:** CHEA Piggy Bank Chairman, Bob Farrens



Articles can be provided by PGERs; District Leaders; PDDGERs; DDGER; PSVP; SVP; District Chairmen; Exalted Rulers; Leading Knights; and anyone who has something of Piggy Bank interest. Deadline for the July/August newsletter is **June 22, 2014** and articles can be sent by email to [robertfarrens@msn.com](mailto:robertfarrens@msn.com). The newsletters come out every other month.

#### Major Project Fundraiser

By Steve Wagstaff, ER Escondido Lodge

The South Coast District lodges, working in conjunction with Chili's Restaurants, sponsored a fundraiser for the CHEA Major Project, which provides vision screening to preschool children and in home therapy to children with special needs. The two day event raised \$850. Taking the lead in this event was Exalted Ruler Steven Wagstaff, from Escondido Lodge #1687, who began this idea by working with the manager at the Escondido Chili's Restaurant. Then he progressed to working with all three managers, including the general manager, and finally the San Diego area manager. This "give back" event was held on January 13<sup>th</sup> and 14<sup>th</sup>, 2014. With each flyer presented at purchase, Chili's donated 15% of their event day sales back to the California-Hawaii Major Project. Over 280 people participated in this event. Future plans are to make this an annual fundraiser for the South Coast District.



Left to right: Robin Wiebe, Mike Baskin, Steven Wagstaff ER, and Michelle Lahue.

The Escondido Elks Lodge #1687 named Mike Baskin, manger of the Escondido Chili's Restaurant, their Citizen of the Year. This award was presented to Mr. Baskin for his help in arranging the two-day Major Project fund raiser that involved all ten South Coast District Lodges and twelve Chili's Restaurants. Mr. Baskin was accompanied by Robin Wiebe and Michelle Lahue, Chili's Restaurant employees.



#### DATES TO REMEMBER

May 14-17, 2014	CHEA Convention in Palm Springs
June 9-11, 2014	Mesquite Golf Tournament
Sept. 19-21, 2014	Area 7 Major Project Golf Tournament



Join the Elks in Palm Springs for the 99th CHEA Convention!

Why YOU should come join us:

- Meet other Elks from other lodges – Make new friends
- Get ideas that work for other lodges that just might work for you
- Meet our new Theme Child and their family



## Inland District Piggy Bank Fun Raiser

By Sandy Rotell, PER Lancaster Lodge and Inland District Piggy Bank Chairman

On February 15, 2014, the Inland District participated in the Whiskey Flat Days' Parade in Kern, California. Kern River Exalted Ruler Cash Wheeler and Inland District Piggy Bank Chair PER Sandy Rotell, rode on the Elks' Piggy Bank float. The float was driven by Dino of the Ridgecrest Lodge 1913. Twenty Elks from the Lancaster, Kern River, and Ridgecrest Lodges watched the float win "Best in Show".



ER Cash Wheeler, District Piggy Bank Chair Sandy Rotell, and Dino

\*\*\*\*\*

## Lancaster Lodge Piggy Bank Fund Raiser

By Sandy Rotell, PER Lancaster Lodge and Inland District Piggy Bank Chairman

On February 8, 2014, the Lancaster Lodge held a Piggy Bank Fund Raiser. A barbeque dinner was catered by the Cheri-Chefs. Leading Knight Joe Costa chaired the evening. Music was provided by one of their

members, D.J. Don. Many full piggy banks were emptied, there were opportunity drawings and a special

dessert auction was held. Lynette Hartnett



donated the cakes, cupcakes, cake pops, cookies and suckers which were all decorated with a "Purple Pig" theme. Sandy Rotell conducted the auction. The evening netted \$1,900 for the Major Project, thanks to all of our Elks and volunteers.





## Bequests and Living Trusts Information

Provided by CHEA Website

The California-Hawaii Elks Major Project is not just our beloved Purple Pig. The Bequests and Living Trusts, known as the BLT, is a growing factor in the long term funding of our Major Project. When you make a contribution through the BLT you are paying it forward and ensuring that the Major Project can continue its important work well into the future.

BLT is an important funding source for the future of The Major Project



The BLT program was started in 1991 to ensure the future of the Major Project. From its

inception the Legacy Trust Fund has grown from zero to more than \$19 million dollars.

While contributions of \$499 or less become part of the operating funds of the Major Project, larger BLT gifts are invested for the future.

### Bequest and Living Trust Gifts

- Cash, Check or Credit Card
- Securities
- Real Estate
- Life Insurance Interests
- Retirement Interests
- Charitable Trust Interests



Because of the size of BLT gifts, they may be funded in a number of ways; cash, checks, credit cards securities, real estate life insurance interests and retirement interests. Remember anyone can make a gift to the BLT, not just Elks. Consider the possibility of making the Major Project a beneficiary of your life insurance or retirement plan.

## You Make The Commitment We do the Work

- BLT Chairpersons provide initial information
- CHEA Investment Specialist present detailed information about the specifics of your gift
- Documents are prepared for your signature
- Your gift is appreciated and recognized



The Commitment Trust is a special gift to the Major Project. While we cannot provide specific legal or tax advice, we can tell you the donor benefits include immediate tax relief as well as a guaranteed stream of income.

You can obtain more information about the Bequest and Living Trusts on the CHEA-ELKS website. BLT information is found under the Major Project tab. Be assured that CHEA works with a qualified investment specialist to create your trust and still 96% of your gift goes to the important work that the Major Project performs.

### California - Hawaii Elks Association

#### BEQUESTS & LIVING TRUSTS

Learn how you can give a testamentary gift of love to the CHEA Major Project to help children by adding a codicil to your will, an amendment to your living trust, or by an income-producing Commitment Trust.

We can show you how to  
**REDUCE TAXES,  
GENERATE INCOME,  
AVOID PROBATE,  
AND STILL PROVIDE FOR  
YOUR HEIRS!**

PLEASE CALL OR WRITE:

The BLT Committee  
c/o The Major Project  
5450 E. Lamona Ave.  
Fresno, CA 93727

or

Call: 1-800-742-1907  
Visit: [www.chea-elks.org](http://www.chea-elks.org)



Andrew Bowring  
2013 CHEMPI Theme Child



## Ralphs Rewards Cards Contribute to the Major Project

By John Nielsen, PER Huntington Beach Lodge

Several years ago John Nielsen, PER from the Huntington Beach Lodge, registered CHEMPI with the Ralphs' Markets Community Rewards Program. It costs the customers nothing and if they follow the registration instructions, every time they shop at Ralphs their expenditures are tracked by Ralphs. Each quarter Ralphs sends John a check payable to the California Hawaii Elks Major Project, Inc, which he forwards to Fresno.



Announcement!  
[www.ralphs.com](http://www.ralphs.com) is now a secure website, and because it is, there are new procedures in place

to enroll your Ralphs Rewards Card. Just follow the directions as you register your Rewards Card for the new term. Please note: You cannot register with an organization UNTIL you first register your rewards card online.

\*\*\*\*\*

## Quilt Donated by Nancy Cook



Nancy Cook, member of the Hemet Lodge, has donated a handmade quilt to be used for a Major Project Fundraiser. The quilt will be raffled off at the State Convention in May. Tickets are available from Bob Farrens, (951) 696-8099. Additional tickets will be available at the Convention.

## Major Project Fund Raiser Cruise



Join your fellow Elks on this fun vacation down the East Coast from Quebec to Fort Lauderdale in October 2014. The Ruby Princess leaves Quebec on October 22, 2014, and arrives in Fort Lauderdale November 3, 2014. Why go on this cruise? For every 8 cabins that sail on the cruise, Princess will give back one full fare that will be donated to the Major Project!

Take a vacation, relax on a 12 day cruise on the Ruby Princess, and know you are helping the Major Project. You will also see the fall colors and the history of this great nation - all at the same time. This cruise will fill up fast, so book your reservations now.

### Contact:

Colleen or Val at Cruise Adventures Unlimited @ 925-935-7447 or

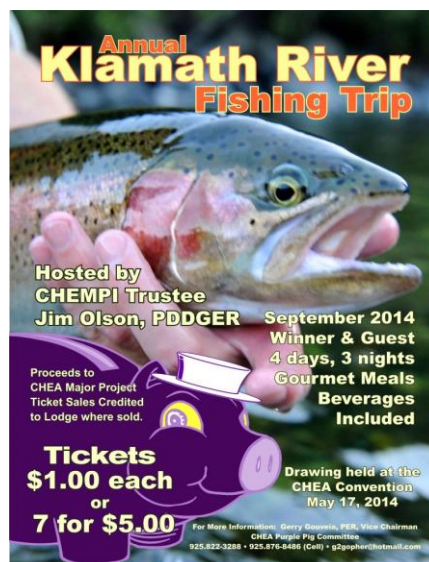
<http://www.cruiseadventuresunlimited.com/>

Mention that you are with the Elks.

\*\*\*\*\*

## Klamath River Fishing Trip

The Klamath River fishing trip is a fund raiser



for the Major Project. The fishing trip is hosted by PDDGER Jim Olson, a Major Project Trustee. The trip is for 4 days and 3 nights; includes gourmet meals and beverages. Raffle Tickets

will be available at the State Convention.



## Stop by the Piggy Bank Booth while you are at the State Convention

Information on the California-Hawaii Elks Major Project will be available at the Piggy Bank Booth. The booth is also the place to drop off the Klamath River Raffle Tickets and the information on the Leading Knights Challenge. We will have several very nice raffle baskets and some Piggy Bank items that you absolutely just have to have.



Pamphlets and forms are available for you to take back to your Lodge



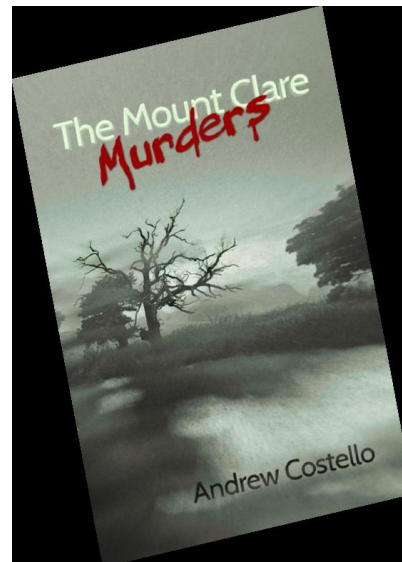
Major Project information will be available at the Piggy Bank Booth. Raffle tickets for the quilt and the Klamath River Fishing Trip will also be available at the booth.



There will be a limited number of Talking Pigs for sale at \$20.00 each.

## Author Donates Proceeds from Book Sales

Mission Viejo, Saddleback Valley Lodge Officer and author, Andy Costello will be at the Piggy Bank Booth in Palm Springs. Andy has already donated over \$1000.00 to the Major Project from sales of his book, "The Mount Clare Murders". Stop by the booth and pick up your autographed copy.



## The Highlights of the CHEA Convention

### Presentation of Gifts to the 2013 Theme Child



Andrew Bowring received a riding tractor from the Elks. This gift will help Andrew develop his motor skills. The following is a quote from his mother. "All in all this was an experience of a lifetime and it would not have been possible without all of the wondrous gifts you all have given to us. Thank you for choosing our son to be the theme child of the year, I feel like he was a more than a perfect choice, but I'm a little partial to him. Thank you for giving Andrew all of the awesome support that he could not have received anywhere else. You Elks are all amazing and have made a tremendous impact on our lives.

With all the gratitude in the world,"

The Bowrings

### The Exalted Rulers March, May 2013

The Exalted Rulers March was started with the following donations:

Elks National Foundation	\$578,960.00
Peter's and Potters Trusts	\$227,286.00
Miscellaneous	<u>\$ 46,711.61</u>
	\$852,957.61



A coin a day so they can walk, talk, see and play!

The Exalted Rulers then walked across the stage and each announced the total that their Lodge was donating.



The Exalted Ruler from San Diego Lodge #168 announced the donation that put us over the \$3,000,000.00 goal.



The Exalted Ruler from the Vista Elks Lodge #1968 announced the final donation. The total donations to the Major Project for the year 2013-2014 were \$3,023,326.83. Your donations continue to help the children to walk, talk, see, and play.







## 14<sup>TH</sup> ANNUAL MESQUITE ELKS CHARITY INVITATIONAL

**Dates:** June 9<sup>th</sup>, 10<sup>th</sup> & 11<sup>th</sup> 2014

**Location: Mesquite, Nevada**

Falcon Ridge Golf Club

Oasis Golf Club – Palmer Course

Entry fee is \$170.00 and hotels range from \$30.00 to \$130.00

**Part of your entry fee is returned to the California - Hawaii Elks Major Project**

The time to register is short. The deadline for hotel special pricing is May 8, 2014. For more information:

Contact: Dennis Baylor, Golf Chairman

Cell: (845)321-2193 Home: (702)345-4507

Email: [elksgolf281114@yahoo.com](mailto:elksgolf281114@yahoo.com)

\*\*\*\*\*



### CALIFORNIA - HAWAII ELKS MAJOR PROJECT, INC. Mission Statement

The California-Hawaii Elks Major Project, Inc., a committee of the California-Hawaii Elks Association, pledges its commitment to addressing the unmet needs of children with disabilities throughout the states of California and Hawaii by developing a program of supporting services to aid these children at no cost to their families and without discrimination



A coin a day so they can walk, talk, see and play!

## BPOE AREA 7 Major Project Golf Tournament



**Location:** Carson City, Nevada

**Date:** September 19, 20 and 21, 2014 (8 am Tee Time)

**Golf:** At Dayton Valley Golf Club on Friday and at Eagle Valley West on Saturday

**Cost:** \$360 per golfer \$200 per non-golfer.

**Hotel accommodations:** The Hardman House with overflow accommodations at the Nugget City Center.

**Deadline for reservations is September 1, 2014.** All entries must be postmarked prior to September 1, 2014.

### Questions and Applications:

Contact Event Sponsor

Gerry Gouveia, PER

CHEA Vice Chairman Purple Pig

925-822-3288

[g2gopher@yahoo.com](mailto:g2gopher@yahoo.com)